



GMT MONTHLY MEMBERSHIP PROGRESS REPORT

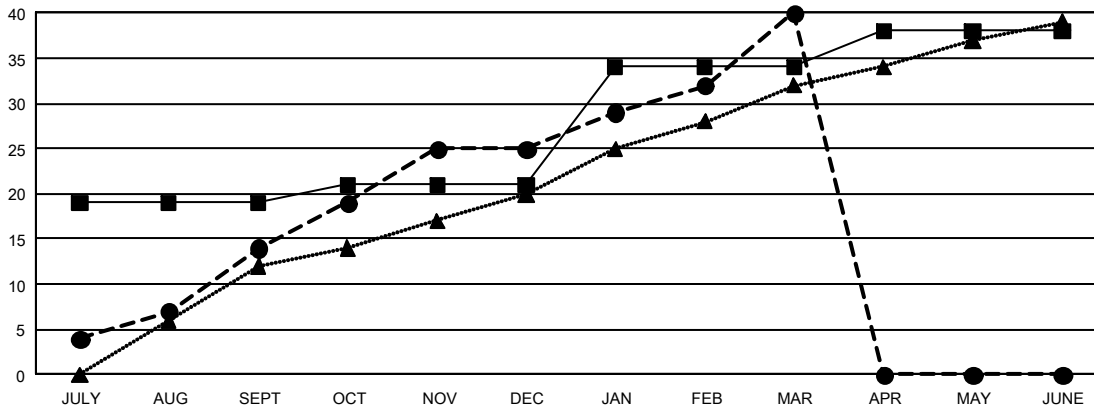
GAT Constitutional Area 5 - Korea

Results as of: 3/31/2025

REPORT DOES NOT INCLUDE CLUBS IN UNDISTRICTED AREAS.

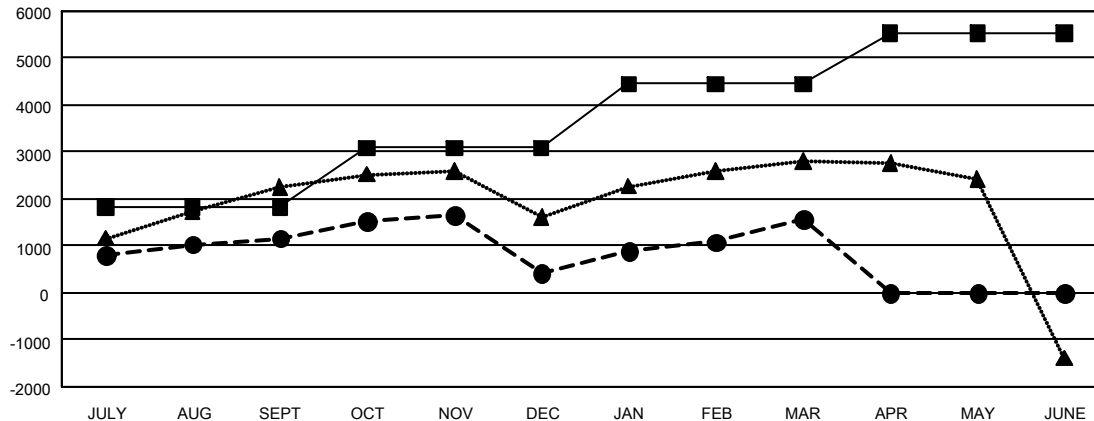
Clubs				Members			
RESULTS FOR 2024-2025				RESULTS FOR 2024-2025			
QUARTER	NEW CLUB GOAL	NEW CLUBS	DROPPED CLUBS	QUARTER	MEMBER GROWTH NET GOAL	MEMBER GROWTH ACTUAL	DROPPED MEMBERS ACTUAL (including transfers)
JULY/AUG/SEPT	19	14	8	JULY/AUG/SEPT	1,828	4,470	2,838
OCT/NOV/DEC	2	11	21	OCT/NOV/DEC	1,256	2,270	2,800
JAN/FEB/MAR	13	15	9	JAN/FEB/MAR	1,363	2,730	1,360
APR/MAY/JUNE	4	0	0	APR/MAY/JUNE	1,085	0	0

GOALS AND ACTUAL NEW CLUBS CUMULATIVE



■ CURRENT YEAR GOALS FOR NEW CLUBS
● CURRENT YEAR ACTUAL NEW CLUBS
▲ LAST YEAR ACTUAL NEW CLUBS

GOALS AND ACTUAL MEMBERS CUMULATIVE



■ MEMBER GROWTH NET GOAL
● MEMBER GROWTH ACTUAL
▲ LAST YEAR MEMBERSHIP ACTUAL

DROPPED CLUBS: 38

DROPPED MEMBERS

DECEASED	191
CLUB CANCELLED	290
OTHER	6,395
TOTAL	6,876

1,499 CLUBS OF 2,052 ADDED 1 OR MORE NEW MEMBERS

[CLICK HERE FOR CUMULATIVE MEMBERSHIP DATA](#)

GENDER DISTRIBUTION

MALE	51,983 (72.71%)
FEMALE	19,500 (27.28%)

TOTAL FAMILY UNIT MEMBERS	0
FAMILY MEMBERS PAYING HALF DUES	0